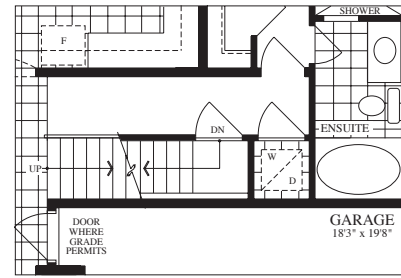
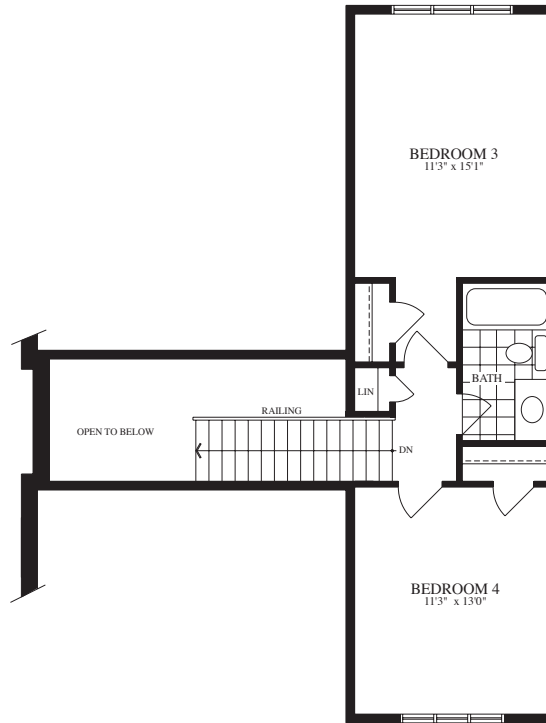


PARTIAL GROUND FLOOR
ELEVATION B 1,207 SQ. FT.

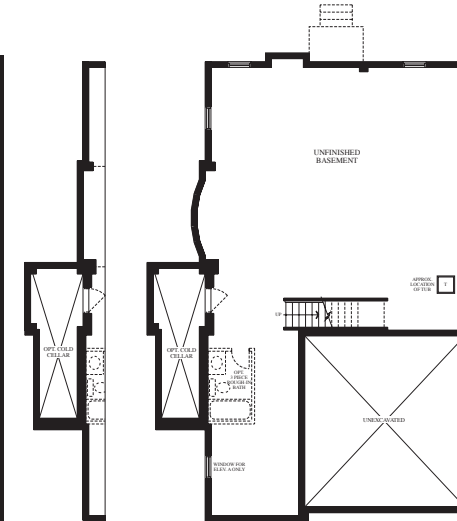
GROUND FLOOR
ELEVATION A & C 1,212 SQ. FT.



PARTIAL GROUND FLOOR
FOR OPT. LOFT CONDITION



OPTIONAL LOFT
ELEVATION A, B & C
WITH LOFT 1,706 SQ. FT.



PARTIAL BASEMENT BASEMENT A & C
ELEVATION B



TOWNHOMES - THE BRIGHTON

1,212/1,706 SQUARE FEET

Materials, specification and floor plans are subject to change without notice. All renderings are artist's concepts. All floor plans are approximate dimensions. Actual useable floor space may vary from the stated floor area. E. & O.E.